



# Good Shepherd Charger News

"Jesus has Overcome" - John 16:31-33

All School Newsletter  
February 14, 2020

## Charger Headlines...

### Calendar of Events

#### Saturday, February 15

- Boys Pee Wee Basketball and Girls Pee Wee Cheerleading 8:00 a.m.
- Madison County Jazz Festival 7:00 p.m.
- Girls A Basketball at St. Charles Tournament

#### Monday, February 17

- No School - President's Day

#### Tuesday, February 18

- Boys Pee Wee Basketball game

#### Friday, February 21

- Family Ag Science Night 6:00 p.m. (Preschool-5th Grade)

#### Family Ag Science Night (Grades preschool – fifth grade)

The deadline to register for the Ag science night and free science kit has ended. However, you may still join us on Friday, February 21 from 6-7:30 at the Main School Entrance. Family Science Night is presented in cooperation with Madison County CAREE/Ag in the Classroom and is a unique opportunity for you and your child to be involved together in an evening of science exploration! We will be doing several different hands-on activities. The topic this year is Earth Day. If you still want to join us, please register by email by contacting Mrs. Sengele' (lsengele@gslcs.org).

#### Variety Show



We need your talent for the Good Shepherd Variety Show. The show will be held on Tuesday, March 10th. All participants will need to have their act previewed on Thursday, February 27th. Forms are being sent home with your child and are available in the office. (See attachment.) Please return all entry forms to your child's teacher or the office by Friday, February 21st if you are planning to audition. Any questions may be directed to Mrs. Daniels or Mrs. Maske.

#### Re-Enrollment - FACTS

You will have access to reenrollment by using the "Reenrollment" button on our school's main website at [www.gslcs.org](http://www.gslcs.org) or you can go directly to <https://logins2.renweb.com/logins/ParentsWeb-Login.aspx> Our District Code is: GS-IL

#### Scholarships

Tuition scholarships for the 2020-2021 school year are available online through FACTS. Good Shepherd and LESA Tuition Scholarship deadlines are March 31st. (Details on LESA scholarship is attached.)

#### Spirit Wear

Check out the new supply of fleece spirit wear in youth sizes available for purchase in the office along with sweatshirts and long-sleeve shirts.

#### Eagle Watching Event

Live bird shows by World Bird Sanctuary will be held at 11 a.m., 1 p.m., and 3 p.m. **tomorrow, Saturday February 15th** at the National Great Rivers Museum. (See attached flyer for more details.)

#### Ash Wednesday

Ash Wednesday is February 26th, and we would like to invite all our school families to worship with us at 4:30 or 7:00 p.m. You are also welcome to enjoy a soup supper from 5:30-6:30 p.m. in the lower level of the church.

For more information:  
[gslcs.org/calendars](http://gslcs.org/calendars)



# Charger Headlines Continued...

## Good Shepherd Open House

Good Shepherd will host an open house on Sunday, February 23, from 1:00 p.m. to 3:00 p.m. All are invited to visit our dynamic school, tour our campus, meet our faculty, and get answers to questions about everything from academics and extracurriculars to tuition and financial aid. For more information, call the school office at 618-344-3153.

## School Dinner Auction - Saturday, March 28th

Hello GSLS Families! The annual dinner auction is just 6 weeks away and we need donations! Items are starting to trickle in but we have a long way to go. If you work somewhere/own a business/have access to an item or service to donate, we'll take it! We're collecting gift cards, tickets, experiences, items, etc. If you want to put together your own basket but need ideas, check out the auction basket starter idea boards in the ECC lobby and the main school lobby.

We still have ad space in the auction booklet. If you or someone you know owns a business, please consider placing an ad. A full page is just \$100 and a half page is \$60. Donation/sponsorship forms are in the school office or via the following link: <https://bit.ly/31J74Xn>

Also, please make plans to attend! This is the largest fundraiser our school does and funds raised go toward the curriculum, facility upgrades, technology, scholarships, and playground/athletic equipment. Plus, it's a really fun night! It's Saturday, March 28th at Columbus Plaza. Doors open at 5:30 p.m. Tickets are now on sale! Reservation forms are in the school office or via the following link: <https://bit.ly/39rRZw0>

Finally, we need volunteers! Attending the auction or not, if you're able to help anytime, Friday evening through the auction and tear down on Saturday evening, please let me know. Thank you so much!

Tori Feichtinger, [vlfeichtinger@gmail.com](mailto:vlfeichtinger@gmail.com) or 314-687-8627

## Somalia Mission: Possible Project

During the month of February, GSLS will continue to support the mission project to provide a message of hope for people in Somalia. Every \$5.00 donation provides a book about the Lutheran faith and stories from the Bible in the Somali or Arabic language. These are given free of charge to Somali people living in Kenyan refugee camps or who have emigrated to other countries, including the U.S. Donations can be given to your child's teacher or to the school office. Your partnership is a blessing.



## In Our Prayers This Week

Each week this school year, the faculty will be praying for the school families. Please remember these and others in your prayers.

The families of: Meghan M.; Ashlyn M.; Jake R.; Alyssa S.; Vivienne S.; Chance S.; and Noah W.

## Something to Consider...

### Happy Valentine's Day

#### Words of Love and Encouragement

Linda Bremner's son Andy was diagnosed with cancer at the age of 8. To lift his spirits, Linda mailed anonymous letters to Andy, letting him know that someone was thinking about him. One day, Andy drew a picture for his anonymous pal and asked his mother to mail it. To her surprise, the bottom read, "P.S. Mom, I love you." Linda continued writing to Andy until he died four years later.

Among the many cards and letters Andy had saved, Linda found an address book. Inside were names and addresses of friends he made at a summer camp for children with cancer. Linda thought of how much Andy had enjoyed receiving mail and so she wrote to all of the children listed in his address book.

When one of the children wrote back.. "Thank you, thank you, thank you, for writing, I didn't think anyone knew I lived" ... Linda realizes the impact a few kind words could make in the life of a child battling a debilitating illness.

In 1984, Linda founded the charity Love Letters. With the help of volunteers, she sends cards, letters, and gifts to over 1,200 sick children, many who suffer from rare or terminal illnesses. They receive cards for their birthdays and holidays, as well as letters every month.

With kind words and encouraging sentiments, Love Letters lets these children know that someone out there knows they live...and that someone out there cares.

Show your love to others as Christ has shown His love to us!

Robert Mayhew  
Principal

**The purpose of Good Shepherd Lutheran School is to provide each student with a quality Christian Education. We recognize that this begins with the premise that Jesus Christ is our Lord and Savior and in Him we have eternal life. The curriculum and all activities are developed around this premise.**

# Charger Headlines Continued...

## Charger Bucks-Scrip Program - Did You Know?

- 5% earnings are now available on gift cards to **MotoMart** (can be used at all locations).
- **Visa** gift cards can be used to pay bills or to pay at any vendor that accepts VISA.
- **Starbucks** Fans - Load your Scrip purchased gift cards into your Starbucks app and receive benefits from both!
- Pay your **Kohl's** charge with Scrip purchased gift cards.

Remaining order dates in February are the 17th, and 24th. (Please have your order in the school office by 9:00 a.m.) Walk-up sales will be offered after school on Fridays in the school lobby and on Sunday mornings between services in the connecting hallway. **50% of your credits earned may go toward the reduction of your tuition or you may donate your credits toward Good Shepherd Lutheran School's General Fund.** If you have any questions please contact the school office 344-3153.

## Classroom Baskets for School's Benefit Auction

The following are the themes for items for the classroom auction baskets. Charger Bucks-Scrip makes it easy for you to order gift cards for your student's basket or use for yourself to purchase something to donate!



**DONATE  
AUCTION  
ITEMS**

- Preschool 3's - Art Club (art and craft supplies)
- Preschool 4's - Friends of Animals (anything pet related)
- Kindergarten - Future Builders Club (building blocks, Legos, K'Nex, etc.)
- 1st Grade - Gamers Club (games, puzzles, cards)
- 2nd Grade - Science Club (anything science related; experiment kits, slime kits, books, etc.)
- 3rd Grade - Adventure Club (camping and outdoor equipment/supplies)
- 4th Grade - Drama Club (movies, entertainment items, movie gift cards, snacks)
- 5th Grade - Sports & Rec Club (sports equipment, stadium cushions, etc.)
- 6th Grade - Community Club (gift cards from local restaurants, locally made crafts or goods)
- Mrs. Hasamear - Home Ec Club (baking & cooking gear, recipe books, cooking utensils, etc.)
- Mr. Rincker - Gardening Club (gardening gloves, knee pads, pots, seeds, potting soil, etc.)



# GREAT MOMENTS IN EAGLE WATCHING



## AUDUBON CENTER AT RIVERLANDS

301 Riverlands Way • West Alton, MO 63386  
[riverlands.audubon.org](http://riverlands.audubon.org)

- **Eagle Ice Festival**  
Jan 4 • 10 am – 2 pm  
*Fun learning activities about eagles and nature.*
- **Raptor Saturdays**  
Jan. 11, 18, 25 & Feb 1 • 10 am – 2 pm  
*Live bird of prey presented by TreeHouse Wildlife Center plus activities for all ages.*
- **Eagle Sundays**  
Jan. 5, 12, 19, 26 & Feb 2 • 10 am – 2 pm  
*Live Bald Eagle presented by Treehouse Wildlife Center plus activities for all ages.*

## ALTON VISITOR CENTER

200 Piassa St • Alton, IL 62002 • [www.riversandroutes.com](http://www.riversandroutes.com)

- **Live American Bald Eagle Meet & Greet**  
Jan. 11, 18, 25 • 10 am – 2 pm

## NATIONAL GREAT RIVERS MUSEUM

#2 Lock and Dam Way • Alton, IL 62002 • [www.mtrf.org](http://www.mtrf.org)

- **Scout Eagle Day** • Jan. 18 • 12 – 4 pm  
*Live eagle meet and greet, eagle-themed activities, and eagle watching from on top of the dam, programs available for Girl Scouts and Cub Scouts. \$5 registration fee.*
- **Masters of the Sky** • Feb. 15 • 11 am • 1 pm • 3 pm  
*Live bird shows by World Bird Sanctuary, free activities for all ages. Show admission: \$5 adults; \$3 children; Free for children 3 & under.*





# Good Shepherd Lutheran School

This year's variety show will review the many talents of individual students, groups of students, or family acts. (Parents are invited to participate with their child/ren.)

**All students and faculty members are invited to participate.**

The variety show will be **Tuesday, March 10<sup>th</sup>, 2020 at 7:00 P.M.**

Auditions will be held **Thursday, February 27<sup>th</sup> from 3:15 P.M. to 4:30 P.M.**

**ALL ACTS SHOULD BE PRESENTED JUST AS THEY WILL BE PERFORMED ON THE NIGHT OF THE VARIETY SHOW. IF YOU ARE NOT PREPARED TO PERFORM YOUR ACT JUST AS IT WILL BE PERFORMED ON THE NIGHT OF THE VARIETY SHOW, PLEASE SAVE YOUR ACT AND AUDITION NEXT YEAR.**

#### **GUIDELINES:**

- There will be a 4-minute time limit for each performance. (Some performances may, by their very nature, be much shorter than a full 4-minute slot.)
- **All acts must exemplify the standards of Good Shepherd Lutheran School. (This includes musical selection and manner of dress.)**
- Each act will be required to audition. Bring sheet music, CD, and a copy of the lyrics. (The Internet provides sites for hard-to-find lyrics.)
- Each person auditioning must turn in a permission slip signed by a parent/guardian.

There will be a dress rehearsal on **Monday, March 9<sup>th</sup>**, beginning at 3:15 P.M.

**Please complete the following information as it should appear in the program and return the bottom portion of this slip to your homeroom teacher by Friday, February 21<sup>st</sup>.**

**NO LATE FORMS WILL BE ACCEPTED!**

.....  
 INDIVIDUAL       GROUP (Please list all participants): \_\_\_\_\_

Name \_\_\_\_\_ Phone # \_\_\_\_\_ Grade \_\_\_\_\_

Dance       Voice       Musical Instrument \_\_\_\_\_  Other (juggling, mime, etc.) \_\_\_\_\_

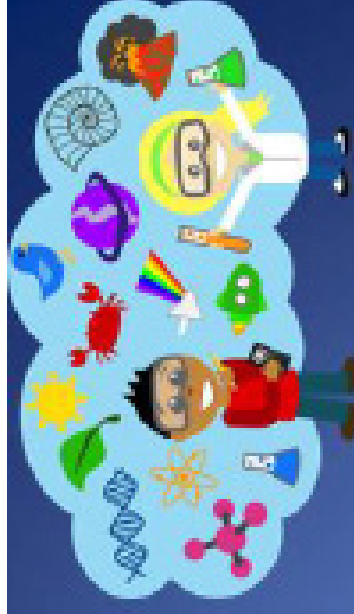
Musical Selection (Title and Composer/Artist)  
\_\_\_\_\_

Permission to perform:

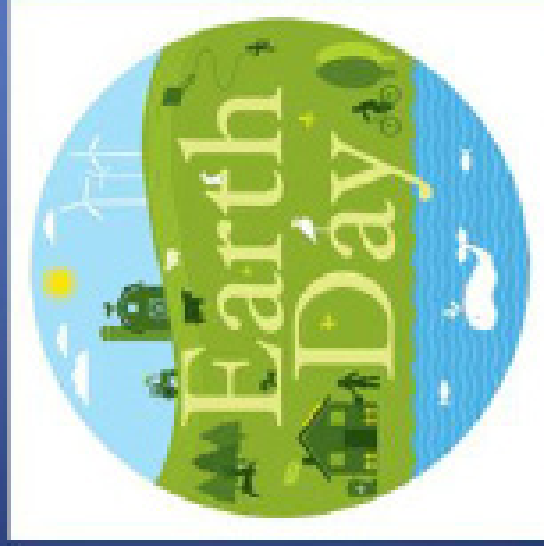
I am aware of my child's intentions to perform in the GSLS Variety Show 2020 and will help my child prepare for his/her performance **according to the guidelines outlined above. I understand that the Variety Show Committee reserves the right to refuse my child's act.**

Signature \_\_\_\_\_ Relationship to the child \_\_\_\_\_ Phone # \_\_\_\_\_

# AGRICULTURE & SCIENCE



## Family Night



- For PRESCHOOL – FIFTH GRADE Students, Friends, and Parents
  - FRIDAY, February 21, 2020
  - 6:00-7:30pm
- Good Shepherd Lutheran School  
Main Entrance

Every day is Earth Day on a farm. Come join us for an evening of earth related activities. The first 30 students to register and attend the event will receive a science activity kit.

Questions? Contact Lynn (lsengele@gslcs.org)



## Tuition Assistance

**Step 1:** Complete Application online at FACTS

- <https://online.factsmgt.com/ga/inst-application/inst/4FG82>
- One application per family (Includes Lutheran high schools) (divorce families must complete separate applications if both parents are paying tuition)

**Step 2:** Submit payment for application (\$35)

**Step 3:** Submit 2019 tax documents - by **April 1, 2020**

- Applicant and co-applicant must submit tax docs
- \*\*\*Tax documents do not have to be filed; but must be prepared and submitted to your application
- FACTS representatives will email or call if documentation is missing, please respond to the FACTS representatives if they contact you
- Documents can be uploaded to your application on FACTS using a mobile phone or a scanner
- Contact LESA or your school with questions about the application or documents

## **Deadline: April 1, 2020**

Have Questions???

**FACTS customer service: 1.866.412.4637**

Monday—Thursday 7:30-7pm; Friday 7:30-5pm

**LESA office: 314.200.0790**

**lesastl.org**



## Do I qualify?

Most families will qualify for some level of assistance from LESA if at least 10% of adjusted gross income from 2019 is used to cover the cost of their child/children's Lutheran K-8 net tuition.



## Required Documentation

**Submit by April 1, 2020**

2019 Tax Documents

- 1) 1040 form
- 2) W-2's
- 3) Income docs
  - ⇒ Food stamps, welfare, child support, worker's comp, Schedule C / business docs, etc.
- 4) Corporate, Partnership, and trust tax forms (if applicable)
- 5) Other docs may be required
  - ⇒ Household bills, daycare, etc