



Good Shepherd Charger News

"Secure In His Arms" Psalm 27:1

All School Newsletter
November 6, 2020

Charger Headlines...

Calendar of Events

Wednesday, November 11

- Veterans Day

Thursday, November 12

- Chapel 8:25 a.m. Gr. 3-8
- Chapel 8:50 a.m. ECC-Gr. 2

Friday, November 13

- Last Day to Order Eckert's pies

Sunday, November 15

- 7th/8th Grade Youth Night 5 pm

Tuesday, November 17

- Make-up day for Vision and Hearing Testing

Thursday, November 19

- Chapel 8:25 a.m. Gr. 3-8
- Chapel 8:50 a.m. ECC-Gr. 2

Saturday, November 21

- ILMEA Jazz Band Competition @ Belleville East High School

Tuesday, November 24

- Mid-Quarter
- Thanksgiving Parties Pre-Grade 8
- Eckert's Pie Order Pickup

For more information:
gslcs.org/calendars



Pies for Thanksgiving

Friday, November 13th is the last day to order Eckert's delicious pies which are being sold by the 8th grade students for their class trip to Washington D.C. Contact a student or print off the attached order form and return it to school with your payment. (Pick up will be on Tuesday, November 24th.) Order yours today!



Parent Teacher Conferences

Thank you for taking the time to talk with your student's teacher(s) and receive the progress report. We believe it is valuable for parents and teachers to work together and have productive communication. The students benefit from this team approach.

Chapel Offerings

Our chapel offerings during the month of November will be given to the Collinsville Food Pantry. The pantry helps those in crisis in the community and attempts to reinforce their patrons' self-esteem and independence. Your generosity and caring is appreciated.



Spirit Wear

The Spirit Wear ordered from our online store is scheduled to be delivered before Thanksgiving. We will send your order home with your student.

Brew In The Lou Passports

Last day to get your Brew in the Lou Passport through Good Shepherd is Thursday, November 12th! The cost of a passport is \$30 for \$300 in craft beer, spirits, food & more from 30 of your favorite breweries, distilleries, wineries, restaurants and retailers. To order complete the form attached or they can be purchased from the school office. Call to arrange pickup - 344-3153.

Health Check and Reporting Illness

1. Please complete the health check form every morning for your child(ren) **even if they are not attending school that day.** <https://forms.gle/bhd5KdtJs2acsPdu9>.
2. If you answer yes to any question, notify the school office - 344-3153.

GSLs Job Openings

Good Shepherd Lutheran School is looking for subs for teaching and preschool aides. These are part-time positions, for more details please contact Mr. Mayhew at 344-3153.

Charger Headlines Continued...

Spread the Word



Let's spread the news of our great school! We have decals to put on your vehicle to support awareness of Good Shepherd in the community. They are **free** and available in the school office or call 344-5153.

Light Up The Community Campaign

GSLs will begin "lighting up the community" with yard signs promoting our school. The campaign will run from November 9-30. Signs are available in the school office for \$10.00. Get yours today!



Good Shepherd Youth Group

Our next 7/8th grade youth night will be on Nov 15th at 5PM for a movie night and making college care packages. Help us stay connected to our college students. The Good Shepherd Youth Groups have received a grant from Thrivent that allows us to send care packages to our college students who are away from home as well as those taking classes online from home or a local campus. Send your student's name and address to the church office at ChurchOffice@gslcs.org

Coaching Positions at MELHS

Metro-East Lutheran High School is looking for a Head Boys Baseball Coach, Head Girls Soccer Coach, and Head Track & Field Coach for the Spring/Summer Season. If you are interested, please contact Athletic Director Jason Batty at jason.batty@melhs.org or 618-656-0043 ext.134.

Charger Bucks-Scrip Program

Weekly orders will be processed on Mondays. (Please have your order in the school office by 9:00 a.m.) An easy way to order and **receive extra bonus offers and higher percentages** is to download Scrip's new app - RaiseRight - from the App Store or Google Play. Enrollment Code is F8CLL9AF2577.

Something to Consider...

You are the light that gives light to the world. In the same way, you should be a light for other people. Live so that they will see the good things you do and will praise your Father in Heaven – Matthew 5:14, 16

Would you like to make the world a better place? If so, you can start by practicing the Golden Rule.

Some rules are easier to understand than they are to live by, and the Golden Rule certainly fits that description. Jesus told us that we should treat other people in same way that we would want to be treated (that is the Golden Rule). But sometimes, especially when we're tired or upset, that rule is very hard to follow.

Jesus wants us to treat other people with respect, kindness, love, and courtesy. When we do, we make our families and friends happy and we make our Father in heaven pleased.

So if you're wondering how to make the world a better place, here's a great place to start: let the Golden Rule be your rule, too. And if you want to know how to treat other people, ask the person you see every time you look into the mirror. The answer you receive will tell you exactly what to do.

Robert Mayhew, Principal



In Our Prayers This Week

Each week this school year, the faculty will be praying for the school families. This week we lift up the following students and their families: Joel A., Saina B., Henry B., Kal B., Cooper B., Annalynn C., Emily F., Josephine F., Hosea G., Frederick H., Micah H., Emily L., and Lauren L.

The purpose of Good Shepherd Lutheran School is to provide each student with a quality Christian Education. We recognize that this begins with the premise that Jesus Christ is our Lord and Savior and in Him we have eternal life. The curriculum and all activities are developed around this premise.

2020 GSLS ANNUAL PIE SALES ORDER FORM

This order form is to be used by Preschool - 7th grade families



Each year, the 8th Grade Students sell delicious pies to fundraise for their class trip, typically to Washington DC. This year's pies will again be freshly baked by Eckert's Bakery & Country Store in Belleville, IL.

Pie Pick Up will be Tues., Nov. 24th by appointment. More detailed information about appointments will be made available after all orders are collected and processed.

Orders due November 13th

Payment is due with order. Cash or check made payable to GSLS

Pie Sales Coordinator:

Angela Dixon, 618/578-8480

adixon@gslcs.org

Pie Varieties - \$20/each

Pie description on back

QUANTITY

- ★ _____ Apple
- ★ _____ Dutch Apple
- ★ _____ Caramel Apple Walnut
- ★ _____ Cherry
- ★ _____ Peach
- ★ _____ Pecan
- ★ _____ Pumpkin
- ★ _____ Strawberry Rhubarb
- ★ _____ No Sugar Added Apple
- ★ _____ No Sugar Added Cherry

Name: _____

Phone: _____

Total # of pies ordered: _____ x \$20

Total amount enclosed: \$ _____

Payment due with order turn-in

Orders due November 13th

If you would prefer to order from an 8th Grade Student, please contact them directly. If this option is chosen, pick up will be through the student.

Eckert's

- **Apple Pie** – Crisp apples and just a hint of cinnamon combine to create an all-American classic.
- **Dutch Apple Pie** – Golden filling of luscious, sliced apples with loads of crumb topping.
- **Caramel Apple Walnut Pie** – Fresh from our bakery, plenty of apples, walnuts and caramel inside and out makes this a dessert you can't miss.
- **Cherry Pie** – A tender, flaky crust filled with tart orchard cherries.
- **Peach Pie** – A golden filling of luscious, tree-ripened peaches, poured into a tender crust.
- **Pecan** – Goosey, sweet filling with perfectly toasted pecans on top, tastes even better when re-warmed in the oven before serving.
- **Pumpkin** – Creamy pumpkin custard – just like Grandma made.
- **Strawberry Rhubarb Pie** – Rich sweet strawberries & tart rhubarb blended together for a great taste.
- **No Sugar Added Apple Pie** – Overflowing with more than a pound of sweet, juicy apples, all baked into a tender crust with no sugar added.
- **No Sugar Added Cherry Pie** – An abundance of sweet, dark Balaton cherries piled high in a flaky crust with no sugar added.

 Eckert's

Pie Tips!



Eckert's pies have a 5 day shelf life at room temperature. For best results, refrigerate pie until two hours before serving.

To preserve your pie longer, remove pie from container, wrap in plastic wrap and return to plastic clamshell. Freeze for up to 2 months. Before serving, thaw pie on the counter for 8 hours.

www.eckerts.com



Support Lutheran Education & Our School
with Your Purchase of a
Brew in the Lou Virtual Tasting Passport!

The Lutheran Elementary School Association (LESA) partners with our school and other Lutheran schools in our community by providing tuition-assistance scholarships and educational resources to support Lutheran education. LESA's fall event, **Brew in the Lou**, is being held virtually this year. You can support LESA and our school with your purchase of **Brew in the Lou Virtual Tasting Passports** which feature 30 of St. Louis' most acclaimed food, beer, wine, and spirit vendors with offers good through October 9, 2021!

An advertisement for the "Brew in the Lou Virtual Tasting Passport". It features a background of faint line drawings of various food and drink items. The text reads: "BREW IN THE LOU VIRTUAL TASTING EVENT", "Buy the Passport and you can take 12 months to taste St. Louis's best beers, wine, spirits, food and more! All offers valid for one year.", "A \$300 Value!", and "Visit lesastl.org/brewinthelou for details". A red starburst graphic contains the price "\$30". To the right is an image of the passport book cover, which has a brown background and features a cartoon bear holding a glass of beer. The cover text includes "LESA", "PASSPORT", and "30 OF ST. LOUIS'S BEST".

Passports sell for
\$30 each and our
school keeps **\$5** of
each book sold!

Use the order form below to purchase **Brew in the Lou Virtual Tasting Passports** and return the form with your payment (check preferred or cash) to receive your **Passports**. **Passports** will be delivered through your child's classroom.

LESA's Brew in the Lou Virtual Tasting Passport Sale

Name: _____

Child's Homeroom Teacher Name or Homeroom Number: _____

Number Purchased _____ at \$30 Each = Total Enclosed \$ _____

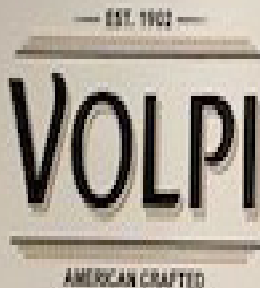
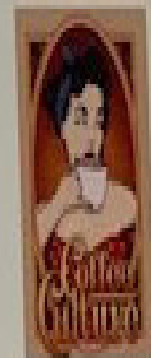
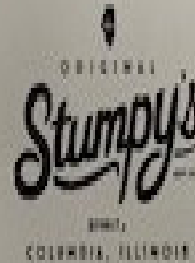
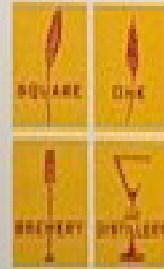
Payment by check or cash
(circle one)

Thank you for your purchase! Find out more about LESA and **Brew in the Lou 2020 Virtual Events** at

www.lesastl.org or on



PARTICIPATING VENDORS



Benton Park Prints

